

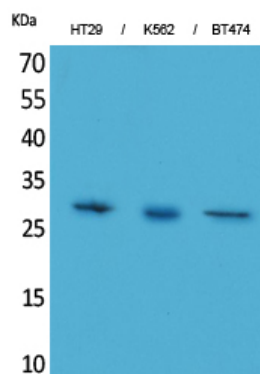


BRMS-1 Polyclonal Antibody

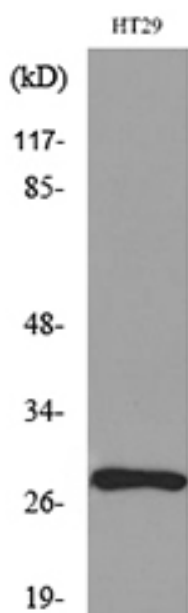
Catalog No	YP-Ab-00566
Isotype	IgG
Reactivity	Human;Mouse;Rat
Applications	WB;ELISA
Gene Name	BRMS1
Protein Name	Breast cancer metastasis-suppressor 1
Immunogen	The antiserum was produced against synthesized peptide derived from the C-terminal region of human BRMS1. AA range:197-246
Specificity	BRMS-1 Polyclonal Antibody detects endogenous levels of BRMS-1 protein.
Formulation	Liquid in PBS containing 50% glycerol, 0.5% BSA and 0.02% sodium azide.
Source	Polyclonal, Rabbit,IgG
Purification	The antibody was affinity-purified from rabbit antiserum by affinity-chromatography using epitope-specific immunogen.
Dilution	Western Blot: 1/500 - 1/2000. ELISA: 1/20000. Not yet tested in other applications.
Concentration	1 mg/ml
Purity	≥90%
Storage Stability	-20°C/1 year
Synonyms	BRMS1; Breast cancer metastasis-suppressor 1
Observed Band	28kD
Cell Pathway	Nucleus. Cytoplasm. Predominantly nuclear.
Tissue Specificity	Expression levels are higher in term placentas than in early placentas. Low levels of expression observed in normal pregnancies and in molar pregnancies.
Function	function:May be a mediator of metastasis suppression in breast carcinoma.,similarity:Belongs to the BRMS1 family.,tissue specificity:Expression levels are higher in term placentas than in early placentas. Low levels of expression observed in normal pregnancies and in molar pregnancies.,
Background	This gene reduces the metastatic potential, but not the tumorigenicity, of human breast cancer and melanoma cell lines. The protein encoded by this gene localizes primarily to the nucleus and is a component of the mSin3a family of histone deacetylase complexes (HDAC). The protein contains two coiled-coil motifs and several imperfect leucine zipper motifs. Alternative splicing results in two transcript variants encoding different isoforms. [provided by RefSeq, Jul 2008],
matters needing attention	Avoid repeated freezing and thawing!

**Usage suggestions**

This product can be used in immunological reaction related experiments. For more information, please consult technical personnel.

Products Images

Western Blot analysis of HT29, K562, BT474 cells using BRMS-1 Polyclonal Antibody. Secondary antibody(catalog#:RS0002) was diluted at 1:20000



Western blot analysis of lysate from HT29 cells, using BRMS1 Antibody.